

Hurricane Joaquin The Bahamas Crooked Island Damage Assessment

Pathfinders Task Force has deployed to 7 Bahamian islands following the Category 4 Hurricane Joaquin. Pathfinders has been tasked by the Bahamian National Emergency Management Agency.



Summary

A Pathfinders Task Force assessment team flew to Crooked Island on 10/5/15 to assess damage to residences and critical infrastructure. Pathfinders Task Force personnel helped coordinate evacuation efforts with the British Royal Navy and Bahamian Defence Force. The Pathfinder team also made contact with citizens that were awaiting evacuation at the airport. Most of the structures on Crooked Island show major damage with several settlements towards the center of the island completely flooded. Cell and radio towers are still standing but may be inoperable, and the surrounding buildings display major damage and there are damaged repeaters on all towers. There is no power and no cellular service available on the island at the current date.



Citizens Awaiting Evacuation



Hurricane Joaquin Response
(22.7473, -74.1775)
Powered by VirtualBadge

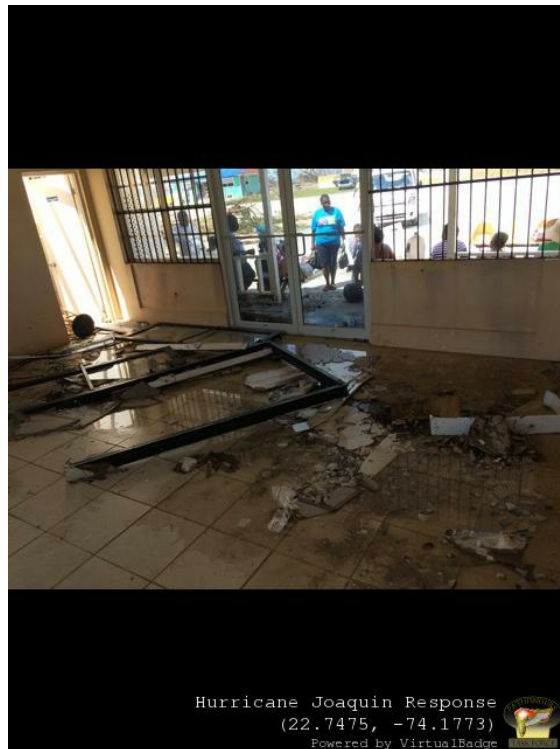


(continued)

Gravitate Neely has Unmet Needs



Airport Terminal Major Damage



Photos



Destroyed Houses

22.7620, -74.2211



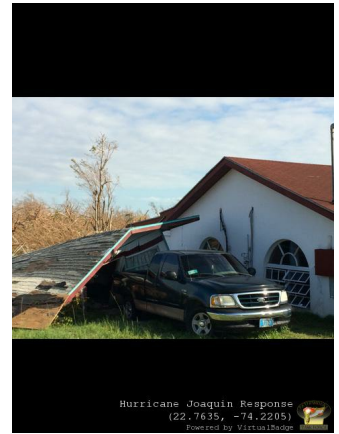
Flooded Roads

22.7690, -74.2115



Major Damage

22.7645, -74.2159



Major Damage

22.7635, -74.2205



Major Damage

22.7640, -74.2190



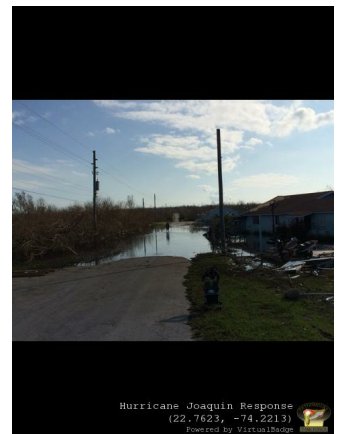
Destroyed Homes

22.7659, -74.2099



Major Damage

22.7551, -74.1953



Flooded Roads

22.7623, -74.2213